

vc4D Module: CFD2VR

CFD2VR

It is our claim to summarize all relevant planning data in one homogeneous, virtual model. This also incorporates scientific data like multi-dimensional vector data. Data of this kind is created in virtual wind tunnels or while planning the airflow of industrial air condition or the particle flow in a paint box just to name a few.

The CFD2VR module allows for the real-time visualization of extensive vector datasets in combination with all other planning data.

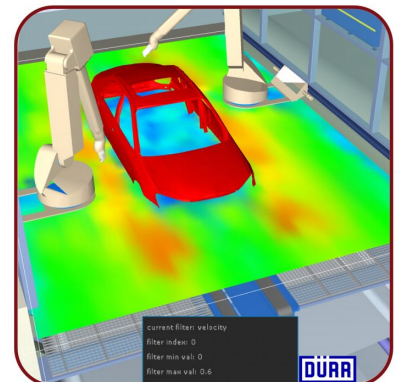
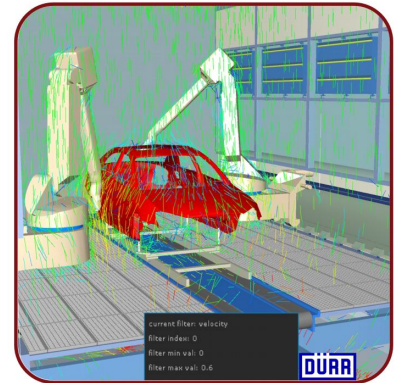
Up to 18 data-dimensions can be defined within the dataset and switched during visualization.

Using a simple user interface the visualization of the data can be controlled on the desktop as on the PowerWall or inside a CAVE.

In addition to the display of the 3D arrow cloud a contour-slice can be rendered. The region of interest can be freely defined on all main axes. The global minimum and maximum value can be set using a range selector.

The advantages of CFD2VR at a glance:

- Computation of big files (>1GB)
- Because of vc4D's superior display performance ideal for interactive presentations.
- Vector and contour-slice rendering of up to 18 data dimensions.
- Manifold possibilities to adapt the data display.
- Open import interface to easily adapt to 3rd party software packages.
- Cluster ready



System requirements:

- Windows™ (2000 / XP / Vista) workstation with at least 1GB main memory
- 3D graphics card with at least 256MB video memory
- 4DC base installation

Possible configurations:

- Desktop (Mouse, keyboard, SpaceMouse™)
- Powerwall (FlyStick, HeadTracking, aso)
- Multi-Channel installations
- Head Mounted Display
- And many more ...



realicon GmbH
Ernst-Ludwig-Straße 7
64646 Heppenheim

Tel. 06252/7901-0
Fax 06252/7901-98

E-Mail: info@realicon.de
www.realicon.de